

Mave Marian, The Sherwood Dowser

TEA AND ENERGY LINES WITH BARONESS BOLSOVER

This is a long one, so grab yourself a cuppa ...

Recently I visited Bolsover, a small town not far from where I live. I had been wanting to get inside the Church for some time and discovered that if I joined a local history tour with the enigmatic 'Baroness Bolsover' I could gain access. A little research showed that the lady in question had died in 1893, so I was intrigued to meet her present-day doppelganger.

In the 17th to 19th centuries, Bolsover was the playground of the Dukes of Portland who lived 6 miles away at Welbeck Abbey, and entertained guests with lavish parties at Bolsover Castle. It was their family that the lady who was to become Baroness Bolsover married into in 1862.

Dressed in fine regalia, with a hat that reminded me of the Mad Hatter, the Baroness swept us through the streets of Bolsover, entertaining us with pearls of wisdom and lamenting the fact that the post office no longer sold penny black stamps. We eventually arrived at the Church of St Mary and St Laurence where we were treated to a very informative tour inside.

I had recently read a fascinating article in the August 2022 edition of the BSD journal '**Dowsing Today**' by **David Gardiner** about why Churches are sited and aligned exactly where they are. He said that most Churches were sited where two or more energy leys cross, and the axis would be precisely sited on one of them. He said that pre-Christian temples would be aligned on a north-south energy ley. However, later Christian churches had to be aligned on a west-east energy ley. The crossing point of the energy leys would be in the Chancel area of the church. Chapels apparently didn't have to conform to the west-east alignment.

ENERGY LEYS CONNECTING LOCAL CHURCHES

I identified 3 energy leys associated with Bolsover church, all three seemed to originate here rather than just passing through. Two seemed to originate from a spiral vortex beneath the west tower which is surmounted by an octagonal spire. One ran exactly along the west-east axis of the church while the other went diagonally from the tower, through the octagonal font in the Baptistry and through a small octagonal building that was added as a vestry following a fire in the 1960s and looks rather like a small version of a medieval chapter house.

A third energy ley originated in a spiral vortex just south of the church where a yew bush now grows. It ran north-south passing through the 17th Century Cavendish Chapel where ancestors of the Dukes of Portland were laid to rest.

The diagonal energy ley extends around 5 miles north-east to St Winifred's Chapel at Holbeck which was built as a private chapel for the Dukes of Portland in 1916. According to Baroness Bolsover, some of the bodies from Bolsover's Cavendish Chapel were removed to St Winifred's.

The west-east energy ley extends almost 6 miles east to the 12th Century St Mary's Church at Cuckney, less than two miles south of Welbeck Abbey and used by the Dukes of Portland before St Winifred's was built.

Interestingly, the axis of St Winifred's Church runs NW to SE and points directly to St Mary's Church at Cuckney and the west-east axis of St Mary's Cuckney points directly back to Bolsover Church, suggesting all three churches were deliberately placed on these energy leys by the architects and Masons who were aware of these energies and how to utilise them. Presumably as St Winifred's was originally built as a chapel it didn't have to conform to the west-east rule.

MANMADE ENERGY LINES

David Gardiner said that Churches built before 1450 would have at least 3 manmade energy lines, one with negative energy and the others with positive energy. The purpose of the negative line would be to cleanse the church by taking away the 'sins and confessions of the people' to an energy drain outside the Church. The positive lines would energise the building and congregation. In his article David said that "These energy lines are not earth energies, as they were put into the fabric of the church by the master mason and his team while they were building it. This was done by tapping on the fabric of the church with thousands of taps with a small hammer during the building process".

I identified the two positive manmade lines that dowsed as very thin lines intertwined with one another giving them the appearance of a caduceus. One was blue/yin and one green/yang. They went from the position of the original font near the north door, along the north aisle to the present font, and out through a back door beneath a Templar-style cross in a circle and into the graveyard. Here they climbed up a masonic-style gravestone to flow through a holed stone above it which somehow helped them to make a 180 degree turn to flow back into the church beneath the east window and along the nave forming a full circuit.

THE ENERGY DRAIN

I found an upwelling power centre at the pulpit with a negative energy line flowing from it to an energy drain outside a modern door in the north wall. The spiral of the energy drain went downwards into the earth and the area around it appeared darker than elsewhere. I asked to be shown how this would have originally functioned. It seemed the idea was that the congregation would focus their attention on the Priest standing in the pulpit. The Priest's role would have been similar to that of a modern-day healer, who would channel the negative energy that the congregation were releasing during the service into the negative energy line, which then would carry it outside to the energy drain where it would be taken deep into the earth to be transmuted.

POWER CENTRES IN CHURCHES

David said that all churches have at least three power centres which are upwelling sources of positive earth energy. These are at the altar, the pulpit, and the font. If any of these features are moved, or the church is demolished, the power sources remain with additional ones being created in the new locations.

The font at Bolsover was originally in the north-west corner and I dowsed the power centre that still remains there. Following a second fire in 1960 the then vestry in the north-east was

turned into a Baptistry where the present 14th century octagonal font, donated by Chesterfield Parish church, now stands on a new power centre.

The high altar used to be underneath the east window, but this was brought forward along the Nave in the 1960s restoration with the area that was formerly the high altar being turned into a Lady Chapel. Again, the power centre at the original altar remains and there is a new one in the position of the present altar.

A HARMONIOUS FLOW

As Ali Denham of the Devon Dowzers will tell you, octagonal geometry is very harmonious, balancing yin and yang, and was a favourite of the Templars. In this case we have an energy ley connecting no less than 3 octagonal structures within the building as well as an energy line to take away unwanted energy and an intertwining pair of yin and yang energy lines, thereby leaving the space both cleansed and energised.

Unlike many churches I have visited, the energy in Bolsover Church felt very well-balanced which makes it feel like a welcoming space. The architects and Masons obviously understood the principles of geomancy and utilised them in both the original building and subsequent restorations. I was reminded of Sowerby church near Thirsk that some other members of the Ridings Dowzers and myself had recently visited which had felt unwelcoming and higgledy-piggledy due to several unsympathetic restorations. How different the two churches felt even though, as one of the others spotted, Sowerby also had a holed stone that energy flowed through.

All in all, a very interesting and educational afternoon's dowsing adventure with the icing on the cake being the cream tea provided by the lady in the Mad Hat.

**BARONESS BOLSOVER'S
TOWN TOUR &
AFTERNOON TEA**

Fridays & Saturdays, 12 noon
*Tour departs from Old Bolsover Yard
Followed by Afternoon Tea at
The Coffee Cup*
£15 per person

Pre-booking essential
Call 07930 258 399
Visit www.baronessbolsover.com

Scan me for tour dates
and special offers

Private group tours
on request

Tour lasts approximately
1 hour

IMAGE 01 Advert for Baroness Bolsover's Town Tour and Afternoon Tea. How could any self-respecting Tea & Cakes Dowser possibly refuse?



IMAGE 02 Lady Augusta Mary Elizabeth Cavendish Bentinck (1834-1893) was the first and only Baroness Bolsover, the title having been created especially for her in 1880. She was also the stepmother of the 6th Duke of Portland of Welbeck Abbey. She kindly came back to life and donned her Mad Hat for the afternoon to regale us with tales of Victorian Bolsover and instruct a passing Tea & Cakes Dowser how to take afternoon tea the proper Victorian way.



IMAGE 03 The Baroness took us to the church of St Mary & St Laurence. A mix of Saxon, Norman and Victorian architecture that has survived fires in 1897 and 1960 as well as having to be underpinned in the 1990s due to mining subsidence.

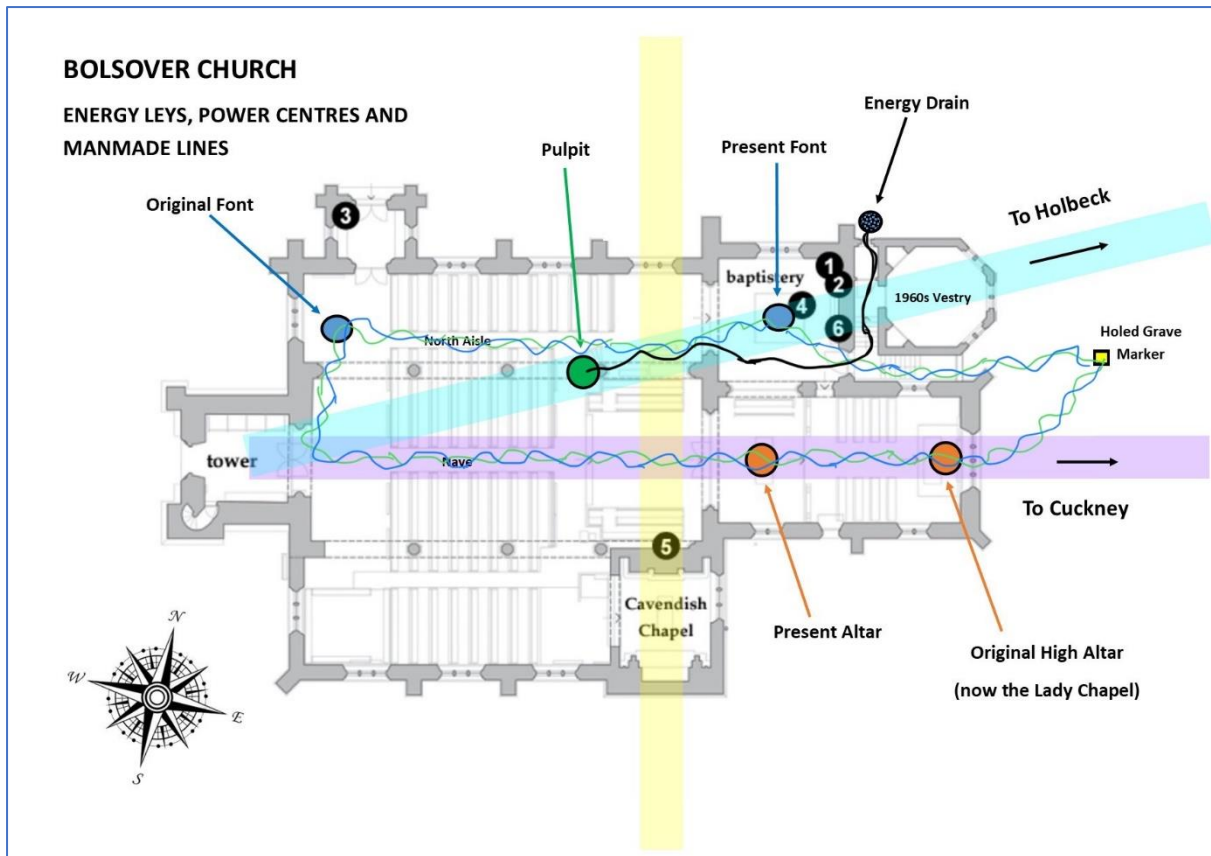


IMAGE 04 Plan of Bolsover Church showing the 3 energy leys (purple, cyan and yellow bands), the power centres, and the manmade energy lines. There is still a power centre where the old font stood, and one at the new font (blue circles). There are power centres at both the former high altar in the Lady Chapel and the present altar (orange circles). The manmade negative energy line (black line) takes unwanted energy from the pulpit (green circle) to an energy drain outside (black/blue circle) serving to cleanse the church. The two positive manmade energy lines (blue/yin and green/yang) reticulate around one another forming a caduceus pattern that loops around the north aisle, through a holed grave marker outside (yellow square) and back along the nave, serving to energise the church. (Ignore the numbers in the black circles, they were already on the plan that I used as a base).



IMAGE 05 Bolsover Church from the north-east showing the paths of the energy leys. The purple and cyan ones emerge from a spiral vortex under the tower. The Cyan one, which connects with Holbeck church, flows from the tower surmounted by its octagonal spire, through the octagonal font in the baptistry and exits the church through the octagonal vestry. The purple one, which connects to Cuckney church, flows from the same spiral vortex under the tower, and along the west-east axis of the church, emerging under the east window.



IMAGE 06 Bolsover Church from the south. The yellow north-south energy ley appears to emerge from a spiral vortex in a yew bush in the churchyard and then enters the church through the wall of the castellated Cavendish Chapel where there are elaborate monuments to the aristocracy who are buried there. Bolsover is perched on a steep magnesian cliff some 50 metres or so south of the Church which may be why the energy leys don't proceed any further south or west.

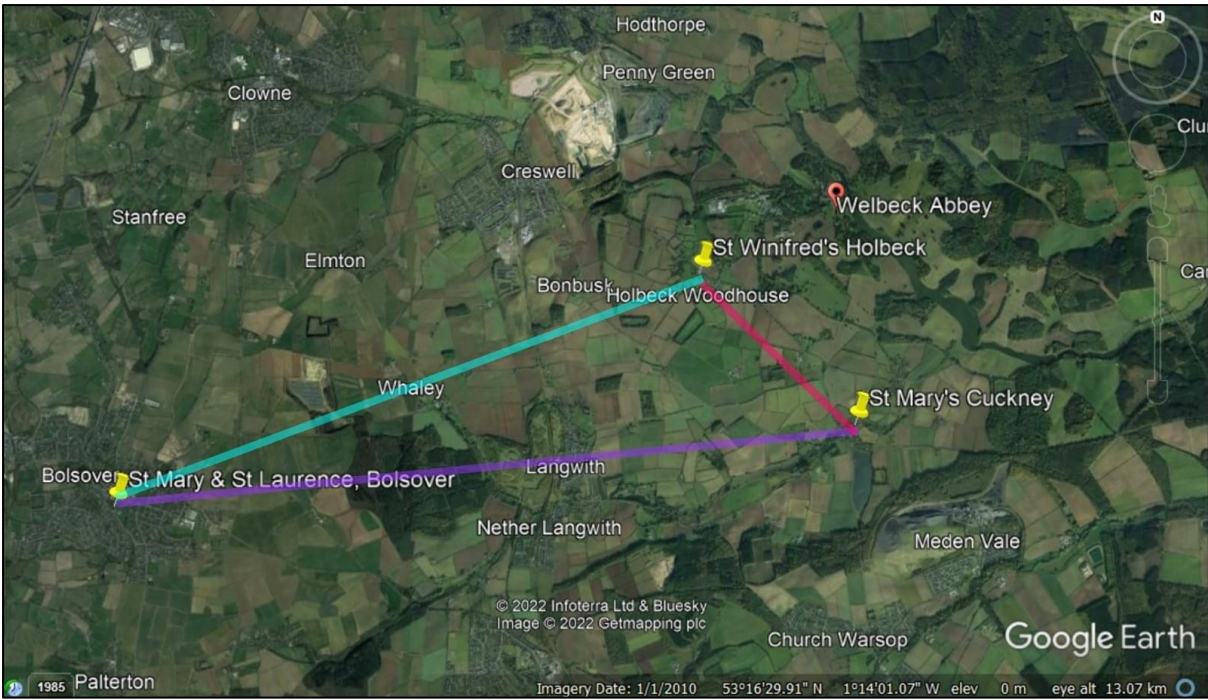


IMAGE 07 These energy leys not only connect Bolsover, Holbeck and Cuckney Churches, but the axes of these churches appear to be aligned precisely on these energy leys. This suggests that, as David Gardiner says in his article, they were all purposely sited on, and precisely aligned to, these energy leys.

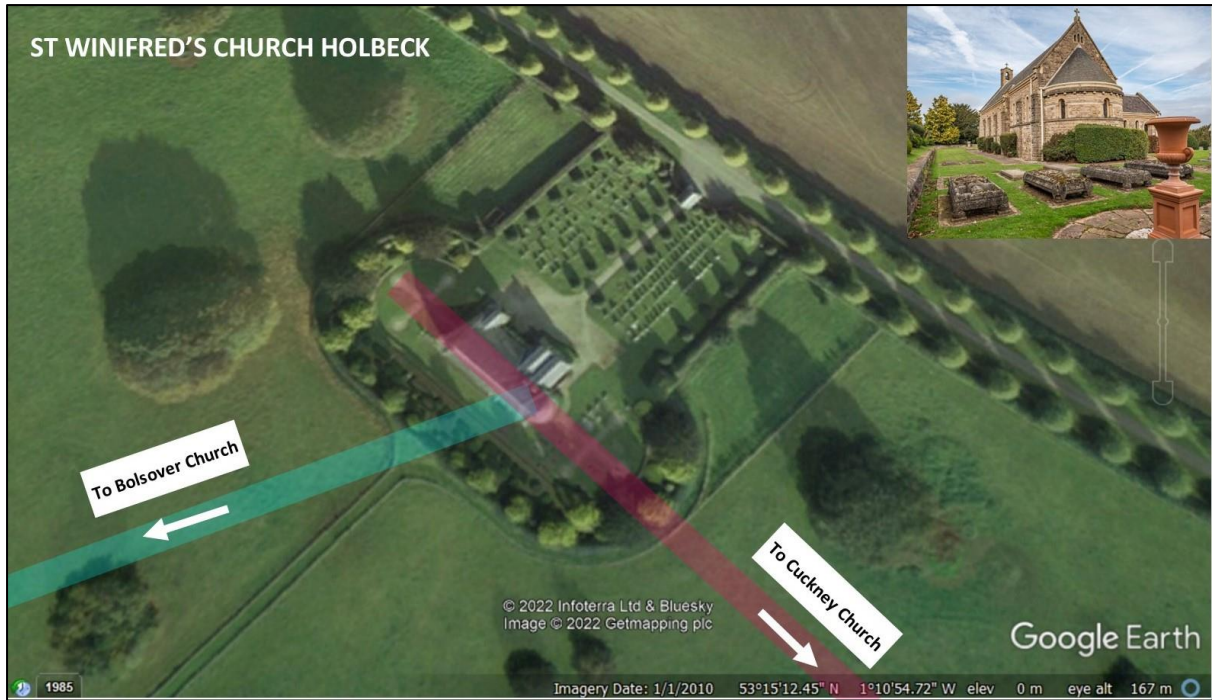


IMAGE 08 St Winifred's Church at Holbeck, originally built in 1916 as a private Chapel for the 6th Duke of Portland whose stepmother was Baroness Bolsover. Enhanced by the landscaping, the axis of the Church (magenta) is aligned precisely with St Mary's Cuckney along an energy ley. The other energy ley (cyan) connects with Bolsover church. There is also another energy ley heading NE to Welbeck Abbey, indicated by the paths in the landscaping, but not shown here.

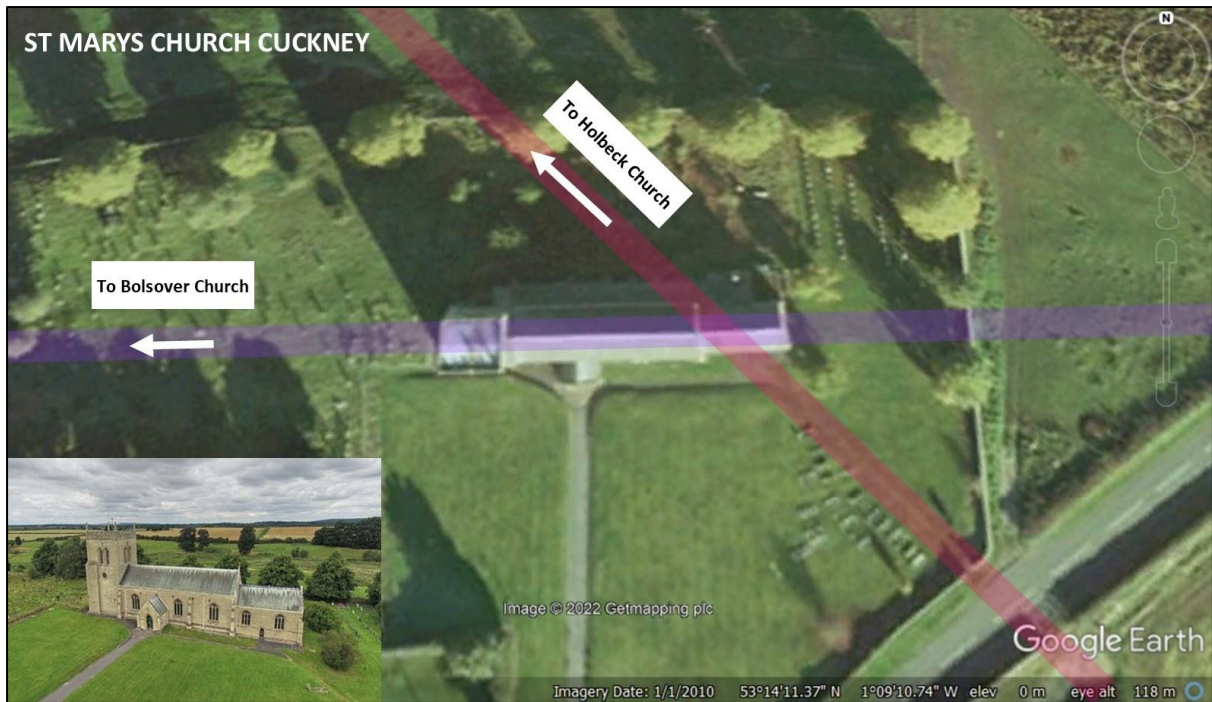


IMAGE 09 St Mary's Church at Cuckney 2 miles south of Welbeck Abbey. The NW-SE magenta energy ley is precisely aligned with the axis of St Winifred's at Holbeck. The east-west axis of St Mary's Cuckney (purple) is aligned precisely with St Mary & St Laurence's Church at Bolsover. There is also another energy ley heading south to Warsop Church that is not shown here.

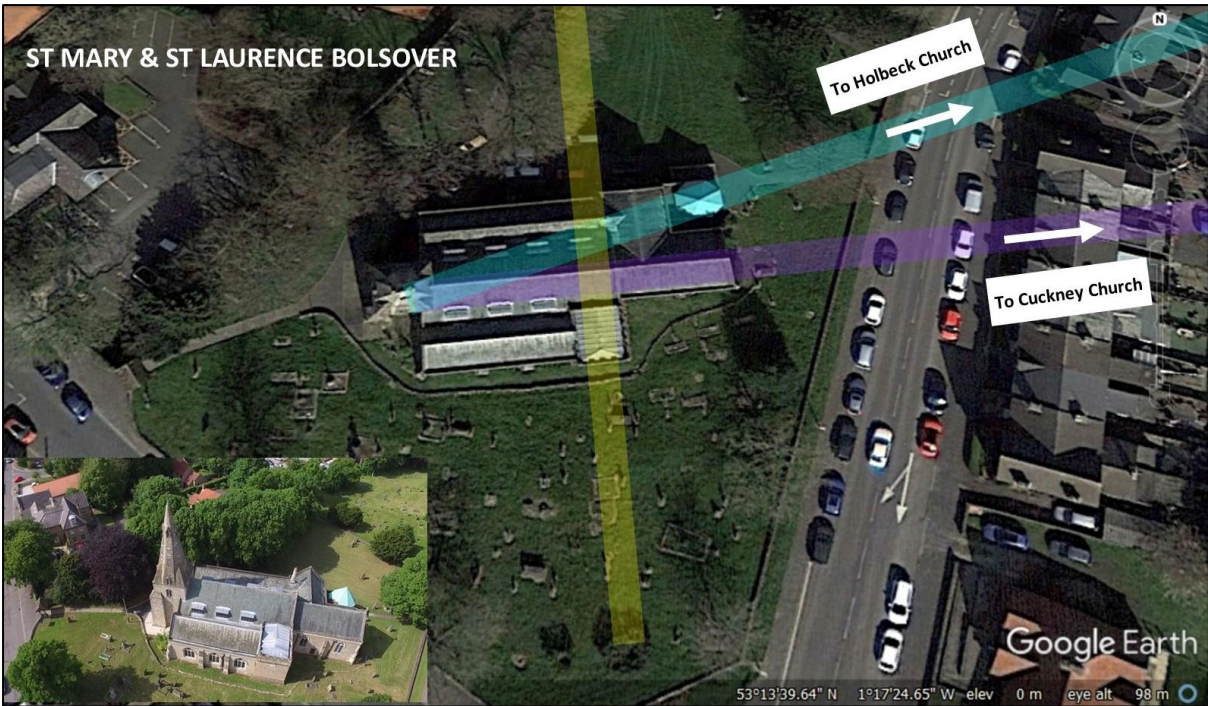


IMAGE 10 Bolsover Church from above showing the 3 energy leys and how they align with the architecture. According to David Gardiner this was deliberately done by the architects and Masons who had a great understanding of geomancy and how to utilise the various energies.



IMAGE 11 Both the font (left) and pulpit (right) in Bolsover Church are located on power centres. A manmade negative energy line flows from the pulpit to the energy drain outside the back door taking away unwanted energy released by the congregation during services thereby cleansing the church.



IMAGE 12 The energy drain outside the 1960s door in the north-east. The energy drain is in the form of a spiral vortex around one metre in diameter flowing down into the earth and taking the unwanted energy brought to it by the negative energy line to be transmuted.



IMAGE 13 The position of the original font at the west end of the north aisle, close to the north entrance door. The power centre can still be detected despite the clutter.



IMAGE 14 Intertwined positive yin (blue) and yang (green) energy lines running along the north aisle (left pic) and linking the power centre in the north-west corner where the old font stood (previous pic) with the power centre in the Baptistry where the new font stands. They then go outside and loop around via a holed stone above a grave marker to come back in through the east window, and through the Lady Chapel to flow through the new altar and along the nave (right pic). The yin and yang together make for a very a harmonious flow and the energies in the church certainly felt very harmonious. According to David Gardiner these two positive lines will have been deliberately put in place by the Masons to energise the church.



IMAGE 15 The intertwined positive energy lines exit through a back door beneath a carved Templar-style cross in a circle and climb up a masonic style gravestone to pass through a hole above it. They reticulate (intertwine together) forming a caduceus pattern, and loop back around to flow back through the east window into the Lady Chapel and along the nave where they form a circuit incorporating the positions of both the original and present fonts.



IMAGE 16 The Masonic grave marker seems to somehow help the reticulating pair of energy lines to make a 180 degree turn and loop back into the Church under the east window and through the former high altar of what is now the Lady Chapel.



IMAGE 17 The former high altar under the east window is now the Lady Chapel altar. The window above it is in memory of Baroness Bolsover herself and was installed following the 1897 fire when this area became the Lady Chapel. This is both on the purple energy ley that connects with Cuckney Church and the caduceus of manmade yin and yang energy lines. Again, we see a cross in a circle which may play a role in directing the path of the manmade intertwining energy lines.



IMAGE 18 The Cavendish Chapel on the yellow north-south energy ley is the only place in the whole church where the energy feels a bit odd. There seems to be a wide circular pillar of energy in the centre connecting a long way up above and a long way down below, which may be what Maria Wheatley would call an 'Earth Chimney' as described in her 'Divining Ancient Sites' book.



IMAGE 19 The very life-like apparition of Baroness Bolsover animatedly pointing to the brass plaque tucked away in a corner of the Cavendish Chapel of Bolsover Church that commemorates her life.



IMAGE 20 And no dowsing adventure is complete without ...



21 ... a tea party hosted by a ghostly lady in a Mad Hat.

Note:

If you would like to go on one of Baroness Bolsover's history tours or take tea with her, please visit her website. She is also available for private events:

<https://www.baronessbolsover.com/>